

BLUEEYE GEN. 2

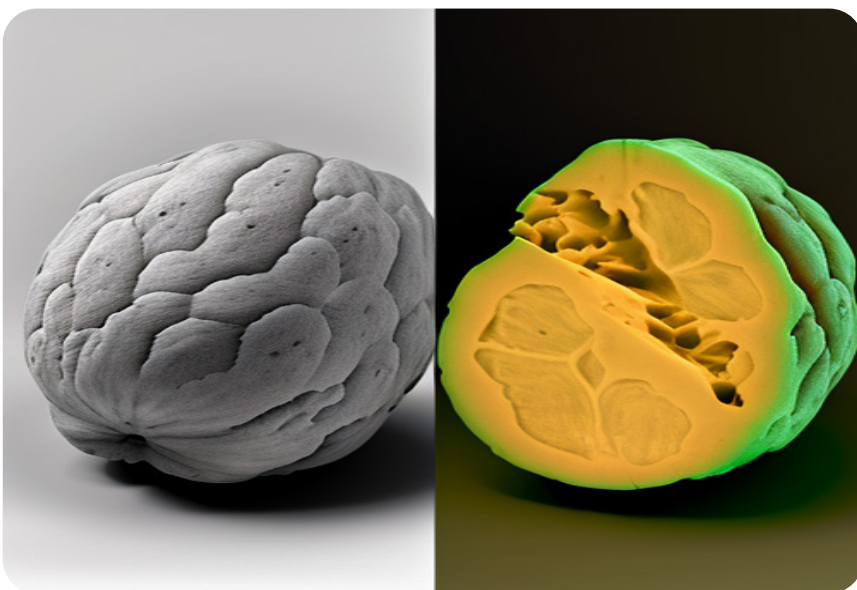
UV Hyperspectral Imaging Camera (220 – 380 nm)

The inno-spec BlueEye Gen 2 system operates over a wavelength range suitable for a variety of applications.

Compatible with industry-leading perClass Mira, the BlueEye Gen 2 can be deployed on the benchtop as well as in the factory. Packages are available with UV lighting and an enclosure.

APPLICATION AREAS:

- Biomedical research and commercial biotechnology
- Forensic Analysis
- Contamination Detection
- Chemical Analysis



BlueEye Gen. 2

FEATURES:

- 1500 spectral pixels
- Robust Design for Challenging Industrial Environments
- USB 3.1, Type-C Interface
- Adjustable Spatial and Spectral ROI



Website



LinkedIn



TECHNICAL SPECIFICATIONS

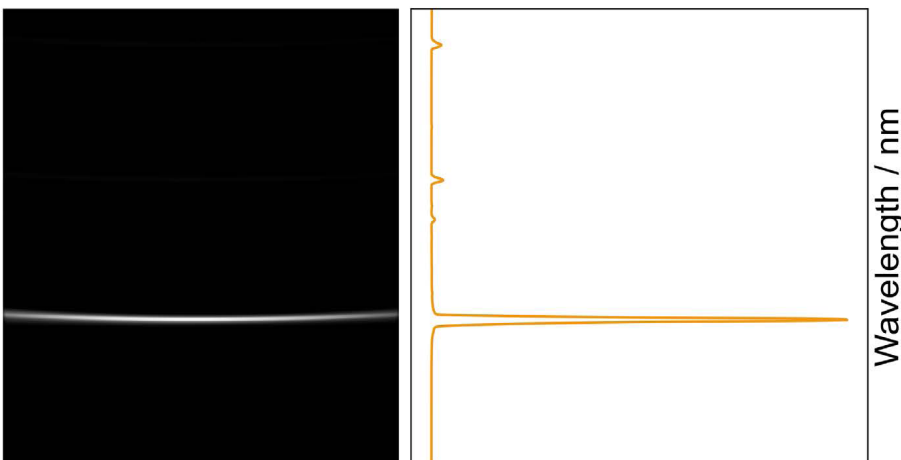
Wavelength Range	220 - 380 nm
Spectral Bands	1845
Spectral Resolution (FWHM)	< 2 nm (with 80 µm slit)
Spatial Pixels	1500
Camera Technology	CMOS, Back-Illuminated
Cooling Technology	TEC + Forced Air
Pixel Size	6.5 µm x 6.5 µm
Standard slit width	80 µm (30, 50, and 100 µm available)
Pixel Pitch	
Numerical Aperture	f/2.4
Dispersion/Pixel	0.1 nm/px
Entrance Slit Width	80 µm
ROI (on system)	
Maximum Frame Rate	40 fps (full-frame)
ADC Bit-Depth	16-bit (2 x 12-bit ADC at low- and high-gain)
Max SNR	
Digital Interface	USB 3.1 type C
Image Correction (on system)	
Optics Temperature Stabilization	
Compliance	[CE, RoHS?]
Ingress Protection	
Weight (without lens)	1.9 kg
Dimensions (without lens)	138 x 87 x 204 mm ³
Input Power	USB 3.1 Type-C [add external 24 VDC?]
Maximum Power	4.5 - 22 W
Operational Temperature Range	10 °C - 40 °C



BlueEye Gen. 2

ACCESSORIES:

- UV Lighting Kit with Enclosure
- [Lenses?]
- [Mounting Adapters?]
- perClass Mira acquisition and analysis software with run-time option



Information in this document is subject to change without notice. inno-spec GmbH reserves the right to change or improve its products and specifications and to make changes in content without obligation to notify any person or organization of such changes or improvements.

As a well-established manufacturer of spectroscopic measurement equipment, **INNO-SPEC** provides optimized solutions for your individual applications; for example, customized OEM cameras for machine builders and system suppliers.